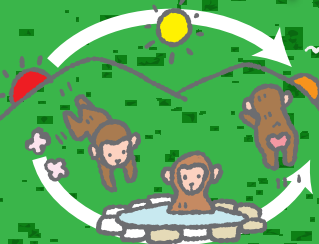


There are times when the monkeys do not come to the park.



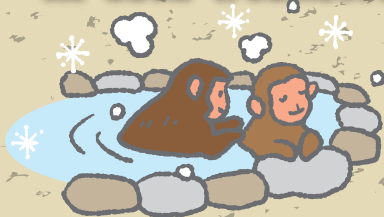
When food is plentiful on the trees in the mountains or when it is mating season the monkeys do not often visit the park.

The monkeys are not always present in the park.



The monkeys live their everyday lives on the mountain, which includes the park area. They come down from the mountain in the morning, spend the day in the park, and return to the mountain in the evening.

The monkeys only enter the hot spring in cold weather!



The Japanese macaques bathe in the onsen to keep themselves warm in the cold weather. They do not bathe in the onsen during warmer seasons. Even when it is cold, if the weather is nice the monkeys will sunbathe.

Yaen-Koen is located deep in the mountains away from villages inhabited by people



The park is the natural habitat of wild animals located 2km away from Kanbayashi Onsen. Please come prepared to walk.

There are no cages at Yaen-Koen.



Yaen-Koen is not a zoo. There are no cages to contain the monkeys and they can be observed at a close distance. However, they are wild animals therefore getting too close can be dangerous. Please follow the park rules as you enjoy observing the monkeys.

To the visitors of Jigokudani Yaen-Koen

Hours of operation

Hours of operation during the summer months are 8:30 a.m. to 5:00 p.m. (winter hours are 9:00 a.m. – 4:00 p.m.), however even during the hours the park is open the monkeys are not always present. The hours of operation are only a guideline. The Japanese macaques found at Yaen-Koen are wild animals. Depending on the weather, the hours of operation are subject to change without prior notification. When you visit please make your plans with some allowance in your schedule.

This is an area for the enjoyment of nature.

In addition to Japanese macaques, a variety of wild animals, insects, and plants inhabit the area so please refrain from bringing pets with you.

Clothing and footwear

Please dress accordingly and wear the appropriate footwear for the weather. In particular, during the winter there is a large amount of snowfall and occasionally a chance of a blizzard. Please dress in appropriate clothing to protect you from the cold.

Snow is removed from the roads and footpaths and anti-slip solvent is applied, however when there are frozen patches they are extremely slippery. We therefore recommend bringing snow boots or crampons with you. (Leather shoes, sneakers, high heels, etc. are extremely dangerous.)

Toilet facilities

There are no toilets along the way between Kanbayashi Onsen and Jigokudani Yaen-Koen (a roughly 30 minute walk over approx. 2km). Please use the toilets found at the Jigokudani Yaen-Koen parking lot or inside Jigokudani Yaen-Koen.

Transportation and parking

We ask that guests use public transportation as much as possible as there are limited spaces available in the parking lot. *The route from Shibu Onsen is closed during the winter (December – March).

Jigokudani Yaen-Koen, Inc.

<https://jigokudani-yaenkoen.co.jp/>

6845 Hirao, Yamanouchi-machi, Shimotakai-gun, Nagano 381-0401 TEL.0269-33-4379 / FAX.0269-33-8521

